

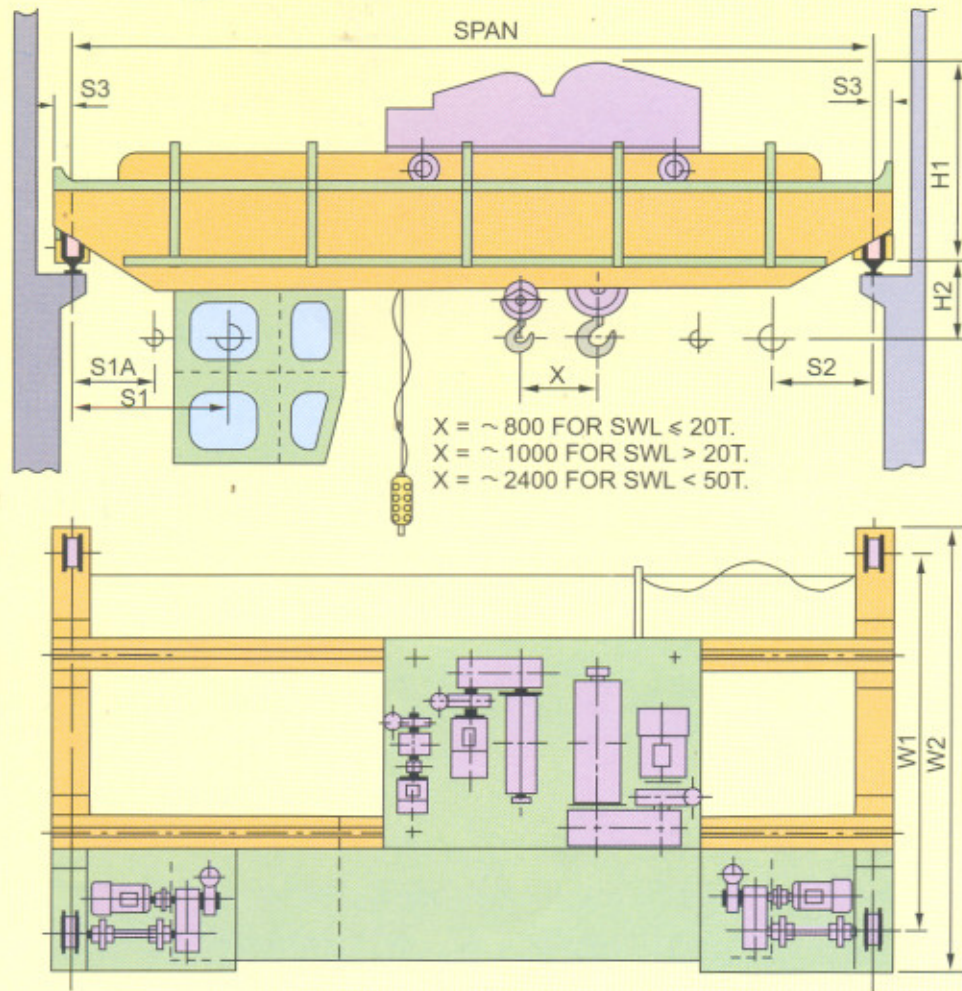
DOUBLE GIRDER EOT CRANES



EDDYCRANES



DOUBLE GIRDER EOT CRANES



Leading Dimensions of DG EOT Cranes

SWL	Span	H1	H2	S1	S2	S3	W1	W2	Cm.Wt	WLoad
MT	M	mm						MT		
05.00	08	1400	100	800	750	160	3000	3700	7.20	4.90
	10	1450	200	800	750	160	3000	3700	8.40	5.25
	12	1500	300	800	750	160	3000	3700	9.00	5.30
	14	1500	300	800	750	160	3000	3800	9.60	5.35
	16	1500	300	800	750	160	3200	4000	11.30	5.80
	18	1500	330	800	750	160	3600	4400	12.50	6.20
	20	1500	370	800	750	160	4000	4800	13.80	6.50
22	1500	450	800	750	160	4400	5200	15.20	6.80	
10.00	08	1600	170	1000	950	165	3200	4000	8.40	8.00
	10	1700	230	1000	950	165	3200	4000	9.40	8.50
	12	1750	250	1000	950	165	3400	4200	11.10	8.60
	14	1750	250	1000	950	165	3400	4200	12.30	8.90
	16	1800	300	1000	950	165	3400	4200	14.00	9.30
	18	1800	350	1000	950	165	3600	4400	15.20	9.60
	20	1800	350	1000	950	165	4000	4800	18.80	10.50
22	1800	400	1000	950	165	4400	5200	20.40	10.80	
20.00	10	2100	100	1200	1050	220	4050	5150	14.30	15.00
	12	2100	220	1200	1050	220	4050	5150	15.50	15.30
	14	2100	220	1200	1050	220	4200	5350	18.00	15.90
	16	2100	270	1200	1050	220	4250	5350	19.70	16.20
	18	2100	420	1200	1050	220	4250	5350	22.10	16.80
	20	2100	420	1200	1050	220	4250	5350	25.70	17.60
	22	2100	470	1200	1050	220	4400	5500	28.40	18.30
07.50	08	1600	100	850	800	165	3100	3900	8.25	6.60
	10	1650	230	850	800	165	3100	3900	9.00	6.90
	12	1650	230	850	800	165	3150	3950	9.50	7.00
	14	1650	230	850	800	165	3200	4000	11.90	7.50
	16	1700	300	850	800	165	3200	4000	13.60	7.90
	18	1700	330	850	800	165	3600	4400	14.90	8.20
	20	1800	350	850	800	165	4000	4800	16.30	8.50
22	1800	350	850	800	165	4400	5200	17.70	8.80	
15.00	08	1900	150	1250	1100	180	3600	4500	10.00	11.20
	10	1900	150	1250	1100	180	3700	4600	12.40	11.70
	12	1900	300	1250	1100	180	3800	4600	12.50	11.75
	14	1900	300	1250	1100	180	3800	4600	13.60	12.00
	16	1900	300	1250	1100	180	3800	4600	17.80	13.00
	18	1900	360	1250	1100	180	3800	4600	19.00	13.20
	20	2000	400	1250	1100	220	4000	5100	22.10	13.90
22	2000	400	1250	1100	220	4400	5500	26.00	14.90	
25.00	10	2200	220	1250	1200	220	4400	5500	14.90	18.00
	12	2200	220	1250	1200	220	4600	5700	17.40	18.70
	14	2200	270	1250	1200	220	4600	5700	19.80	19.20
	16	2200	420	1250	1200	220	4400	5500	22.70	19.20
	18	2400	270	1250	1200	270	4500	5800	27.50	21.00
	20	2400	320	1250	1200	270	4500	5800	28.70	21.30
	22	2400	420	1250	1200	270	4500	5800	31.40	22.00

DOUBLE GIRDER EOT CRANES



Leading Dimensions of DG EOT Cranes

SWL	Span	H1	H2	S1/S1A	S2	S3	W1	W2	Crm.Wt	W.Load	SWL	Span	H1	H2	S1/S1A	S2	S3	W1	W2	Crm.Wt	W.Load		
MT	M	mm									MT	MT	M	mm									MT
30.00	10	2500	100	1200	1200	270	4900	6200	17.50	21.50	35.00	10	2300	270	1400	1350	270	4800	5900	19.40	24.70		
	12	2500	100	1200	1200	270	4900	6200	21.10	22.30		12	2500	270	1400	1350	270	5100	6300	19.50	24.70		
	14	2500	220	1200	1200	270	4900	6200	22.30	22.70		14	2500	270	1400	1350	270	5100	6400	21.90	25.30		
	16	2500	220	1200	1200	270	4500	5800	26.30	23.60		16	2500	270	1400	1350	270	4700	6000	27.10	26.60		
	18	2500	320	1200	1200	270	4600	5800	28.70	24.00		18	2500	370	1400	1350	270	5100	6300	29.90	27.20		
	20	2600	320	1200	1200	295	4600	6000	32.50	25.00		20	2500	520	1400	1350	270	5100	6300	33.60	28.00		
22	2500	320	1200	1200	295	4600	6000	35.20	25.60	22	2500	570	1400	1350	270	5100	6400	36.20	28.00				
40.00	10	2600	100	1300	1400	270	5100	6300	22.30	28.40	50.00	10	2700	130	1550	1300	295	5400	6800	23.90	34.10		
	12	2600	220	1300	1400	270	5100	6300	22.40	28.40		12	2900	100	1550	1300	370	5400	7000	27.30	35.00		
	14	2600	320	1300	1400	270	5100	6300	23.60	28.60		14	2900	100	1550	1300	370	5400	7000	32.10	36.10		
	16	2600	330	1300	1400	270	5100	6300	30.40	30.20		16	2900	230	1550	1300	370	5400	7000	32.10	36.10		
	18	2700	330	1300	1400	295	5100	6500	34.10	31.10		18	2900	230	1550	1300	370	5400	7000	37.70	37.40		
	20	2700	380	1300	1400	295	5200	6500	36.50	31.70		20	2900	280	1550	1300	370	5500	7100	43.80	38.70		
22	2700	430	1300	1400	295	5200	6600	42.80	33.10	22	2900	280	1550	1300	370	5500	7500	47.60	39.70				
10/03	10	1700	230	1300	950	165	3200	4000	8.90	8.25	15/03	10	1900	140	1300	1100	180	3700	4600	12.90	11.90		
	12	1750	150	1300	950	165	3350	4200	11.60	8.90		12	1900	210	1300	1100	180	3800	4600	13.00	12.00		
	14	1750	220	1300	950	165	3400	4200	12.80	9.20		14	1900	310	1300	1100	180	3800	4600	14.10	12.20		
	16	1800	300	1300	950	165	3400	4200	14.50	9.60		16	1900	310	1300	1100	180	3800	4600	18.30	13.20		
	18	1800	350	1300	950	165	3600	4400	15.70	9.90		18	1900	360	1300	1100	180	3800	4600	19.50	13.40		
	20	1800	350	1300	950	165	4000	4800	19.30	10.80		20	2000	420	1300	1100	220	4000	5100	22.60	14.10		
22	1800	400	1300	950	165	4400	5200	20.90	11.00	22	2000	370	1300	1100	220	4400	5500	26.50	15.10				
20/05	10	2100	100	1300	1050	220	4050	5150	14.80	15.30	25/05	10	2200	220	1300	1200	220	4400	5600	15.40	18.30		
	12	2100	220	1300	1050	220	4050	5150	16.00	15.60		12	2200	220	1300	1200	220	4600	5600	17.90	19.00		
	14	2100	220	1300	1050	220	4250	5350	18.50	16.20		14	2200	270	1300	1200	220	4700	5600	20.30	19.50		
	16	2100	270	1300	1050	220	4250	5350	20.20	16.70		16	2200	420	1300	1200	220	4400	5600	23.20	20.20		
	18	2100	420	1300	1050	220	4250	5350	22.60	17.30		18	2400	270	1300	1200	270	4500	5800	28.00	21.30		
	20	2100	420	1300	1050	220	4250	5350	26.20	17.90		20	2400	320	1300	1200	270	4500	5800	29.20	21.60		
22	2100	470	1300	1050	220	4400	5500	28.90	18.80	22	2400	420	1300	1200	270	4500	5800	31.90	22.30				
30/10	10	2500	100	1500	1200	270	4900	6200	18.30	21.90	35/10	10	2300	220	1500	1300	270	4900	6200	20.20	25.10		
	12	2500	100	1500	1200	270	4900	6200	21.90	22.70		12	2500	270	1500	1300	270	4900	6200	20.30	25.10		
	14	2500	220	1500	1200	270	4900	6200	23.10	23.10		14	2500	270	1500	1300	270	4900	6200	22.70	25.70		
	16	2500	220	1500	1200	270	4900	6200	27.10	24.00		16	2500	270	1500	1300	270	4900	6200	27.90	27.00		
	18	2500	320	1500	1200	270	4900	6200	29.50	24.40		18	2500	370	1500	1300	270	5100	6300	30.70	27.60		
	20	2600	320	1500	1200	295	4900	6200	33.30	25.40		20	2500	520	1500	1300	270	5100	6300	34.40	28.40		
22	2600	380	1500	1200	295	4900	6200	36.00	26.00	22	2500	570	1500	1300	270	5100	6400	37.00	29.00				
40/10	10	2600	100	1500	1300	270	5100	6300	23.10	28.80	50/15	10	2700	500	1750	1300	370	5400	6800	24.90	34.60		
	12	2600	400	1500	1300	270	5100	6300	23.20	28.80		12	2900	500	1750	1300	370	5400	7000	28.30	35.50		
	14	2600	400	1500	1300	270	5100	6300	24.40	29.00		14	2900	500	1750	1300	370	5400	7000	33.10	36.60		
	16	2600	400	1500	1300	270	5100	6300	31.20	30.60		16	2900	500	1750	1300	370	5400	7000	33.10	37.00		
	18	2700	400	1500	1300	295	5100	6500	34.90	31.50		18	2900	500	1750	1300	370	5400	7000	38.70	37.90		
	20	2700	400	1500	1300	295	5200	6500	37.30	32.10		20	2900	500	1750	1300	370	5500	7100	44.80	39.20		
22	2700	400	1500	1300	295	5200	6600	43.60	33.50	22	2900	500	1750	1300	370	5500	7500	48.60	40.20				
100/20	12	2300	500	1800	1500	400	5000	6500	54.0	31.7	75/15	12	2800	500	1750	1400	400	5000	6500	44.0	24.0		
	14	3000	500	1800	1500	400	5000	6500	58.0	32.4		14	2900	500	1750	1400	400	5000	6500	47.0	24.6		
	16	3100	500	1800	1500	400	5000	6500	62.0	33.1		16	3000	500	1750	1400	400	5000	7100	51.0	25.3		
	18	3200	500	1800	1500	400	5600	7100	66.0	33.8		18	3100	500	1750	1400	400	5600	7100	55.0	26.0		
	20	3300	500	1800	1500	400	5600	7100	76.0	35.2		20	3200	500	1800	1400	400	5600	7100	61.0	27.0		
	22	3300	500	1800	1500	400	5600	7100	81.0	36.0		22	3200	500	1800	1400	400	5600	7100	68.0	27.9		
24	3400	500	1800	1500	400	5600	7100	86.0	36.9	24	3300	500	1800	1400	400	5600	7500	72.0	28.5				

Note : 01. Due to continuous technological improvements, dimensions are subject to change without notice.

02. All cranes confirm to IS - 807, IS -3177, Class II(M5) duty.

03. Details of cranes as per Class 3 and 4 duties could be supplied on request.

04. Dimension H1 could be further reduced, but would result in equivalent increase in dimension H2.

05. Above dimensions are for cranes having 6m lift. There may be minor variations in dimensions for higher height of lift.

06. 75/15 and 100/20 Tonnes Cranes are with eight wheels in end carriage. Wheel load calculated accordingly.

For crane capacity above 100 tonnes or crane span above 24 mtrs we will submit separate clearance diagram.

Bridge Drive :-

- Single/Twin Drive with Squirrel Cage/Slip Ring Induction Motors, Through Totally Enclosed, Oil Immersed, Helical Gearboxes.
- All Single Drive Units, provided with amply proportioned Line Shafting, supported on Self Aligning Bearings, housed in Plummer Blocks.

Motors :-

- Foot Mounted, IEC, Frame Size, Crane Duty Motors for Hoisting / Auxiliary Hoisting, Cross Travel and Long Travel. Insulation Class for all motors B/F

Brakes :-

- Electro Hydraulic Thruster for all motions. DC/AC EM brakes or additional brakes on request.

Crane Control :-

- From Floor through Pendant Push Buttons/ Open Cabin / Totally Enclosed Cabin / Radio Remote Control operating at 110/24 V. Electrical Switch Gears mounted inside dust proof Control Panels, with suitable access for maintenance.

Power Supply System :-

- To Hoist & Cross Travel through Trailing Cables. To Crane through Trailing Cable/M.S. Angle Iron Conductors / Shrouded G.I. / Copper Conductors to customer's choice.

Painting :-

- All exposed parts primed with Red-Oxide Zinc Chromate Primer and finished with Enamel Paint to customer's colour scheme.

Special Features :-

- Designs conform to IS-807, IS-3177 BSS / DIN / FEM
- Optimum Design ensuring minimum Dead Weight, Wheel Loads, Head Rooms and Clearances, reducing building costs.
- Micro speed through planetary Gear Boxes OR through variable Frequency Drives (VFD) for all motions, if required.
- Forged Runner Wheels on Spherical Roller Bearings, resulting in long trouble free service,
- Hobbed and Run-in Heat Treated Gears from High Carbon & Alloy Steels for long trouble free service.
- Standardised Unit Sub-Assemblies used for complete range, ensuring possibility of spares supply from stocks.
- Wide range of Lifts, Hoisting, Cross & Long Travel Speeds to suit every operational requirement.
- Quick Deliveries and Prompt After Sales Service.
- Competitive Prices,
- Best Quality of Bought - Out Components provides excellent performance of Cranes.

Design :-

- Amply Proportioned Main Girder of Box Section, fabricated from tested quality IS-2062 plates, all butt welds 100% radiographed. Main Girder further stiffened with Long and Short diaphragms. End Carriages, either from rolled section or fabricated from plates.
- Well proportioned Rotating Axle Type Runner Wheels on "L" Type Bearing Housings.
- Rope Drum fabricated from IS-2062, stress relieved & long seams 100% Radiographed or from seamless pipes.

Other Products :-

- Electric Hoists, • SG EOT/US-SGEOT Cranes. • Steel Mill / Grabbibng Duty Cranes • Jib Cranes.
- Double Girder HOT/Goliath Cranes, • Grab Buckets • HOT Single Girder Cranes. • Electrical Winches.
- Flame Proof Crane and Hoists. • Consultancy for Material Handling.



EDDYCRANES
ENGINEERS PVT. LTD.

3 / 23, Tardeo Airconditioned Market, Tardeo Road, Mumbai - 400 034.
Phone : ++91-22-2352 5103 / 2352 1798 / 2352 2710 • Telefax : 2352 1886
E- mail : eddycranes@vsnl.com • Website : www.eddycranes.com

Works : 66 / 8, Block D2, MIDC Industrial Area, Chinchwad, Pune 411019.
Telephone : ++91-20-5611 4187 / 88 / 2747 0521 Telefax : 2747 4810



ISO 9001 : 2000 COMPANY